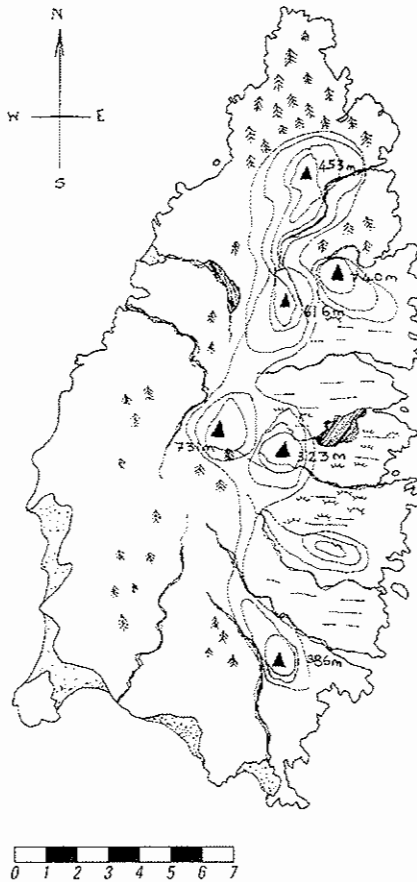




## Worksheet B3

Do this with Lesson 3.

Put all completed work in your folder.



### Geographical profile

The climate of this island is temperate maritime, similar to Ireland's. A mountain range runs north/south down the centre of the island. There is scree on steeper slopes, with lush open plains west of the mountains. To the east, the land is interrupted by hills and valleys. Mountain streams feed into a lake and rivers, creating a few marshy areas. The northern part of the island is densely forested. There is a rugged eastern coastline. In the south, the climate is milder, with sandy beaches and coves. Forest in the south is less dense. The wildlife is similar to that found in Ireland.

### Brainstorming

What factors should your group consider in deciding on the best place for your settlement? List them. The Key Concepts will give you some ideas.



### Key Concepts

Shelter from the elements. Source of fresh drinking water. Sources of food and fuel. Sources of materials. Access routes to other parts of the island. Protection from predators. Suitable ground conditions.

### Group decisions

1. Name the island you have discovered.  
.....
2. Study the map. Discuss the geographical profile and Key Concepts. Decide on a site for your settlement. Place an X on the site. List your reasons for choosing this site.  
.....  
.....  
.....