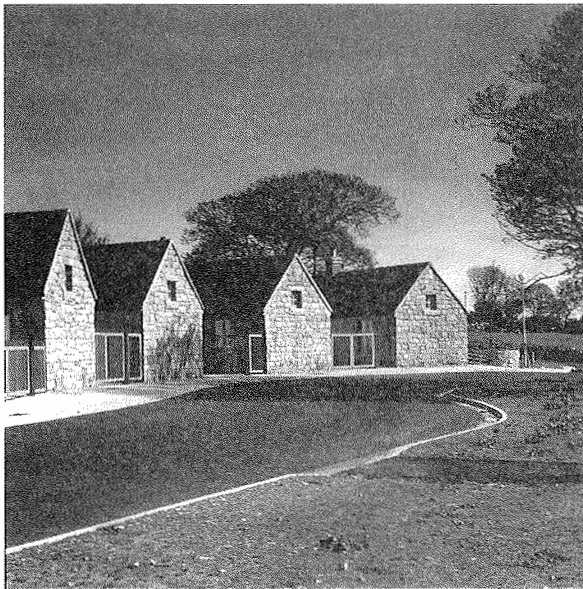
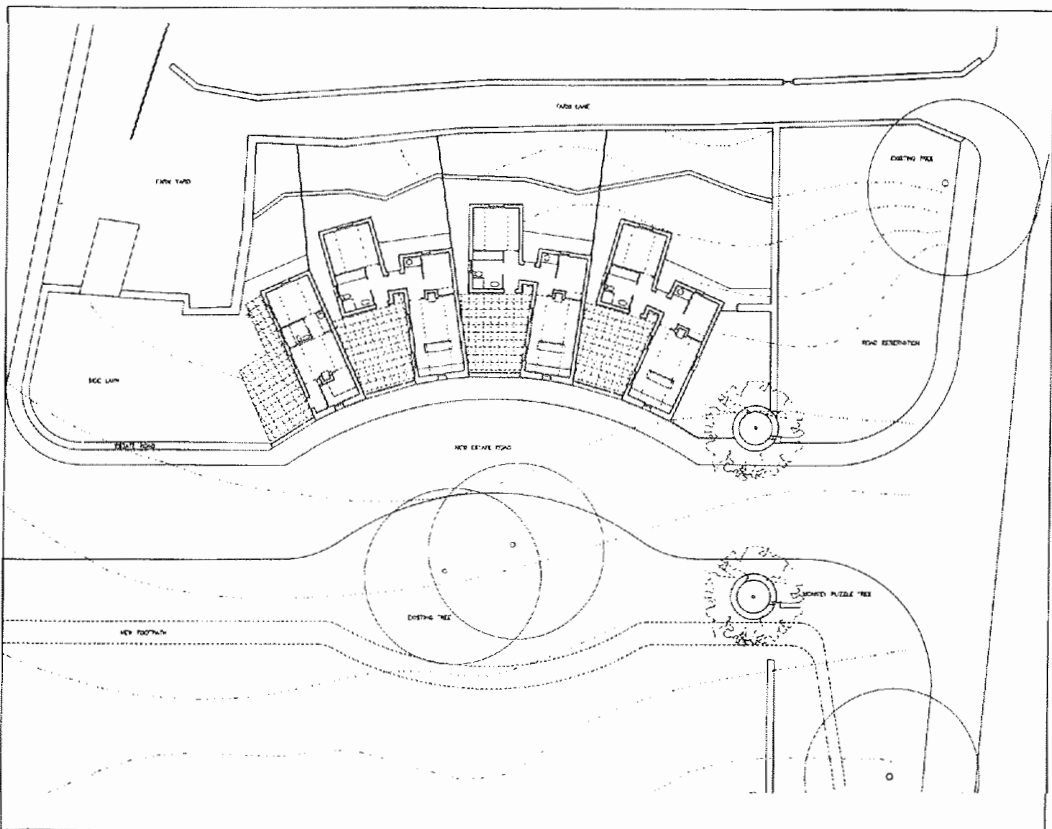
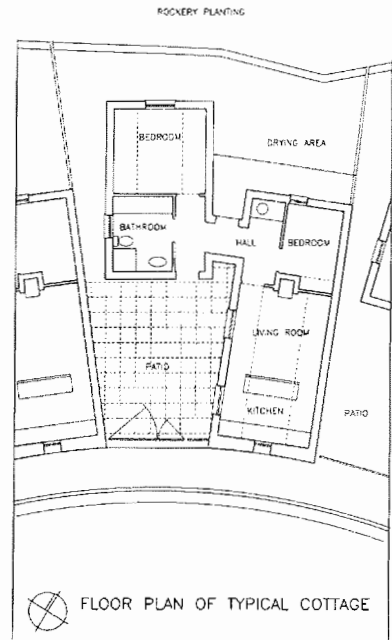


INFORMATION SHEET 15: Four Houses

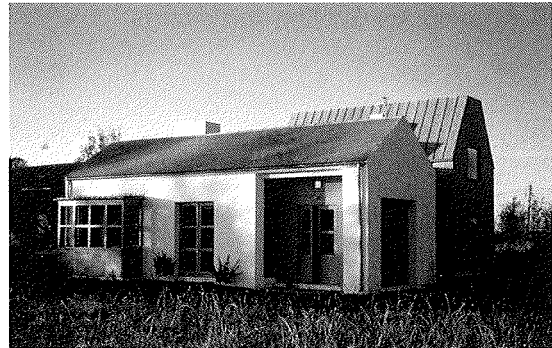
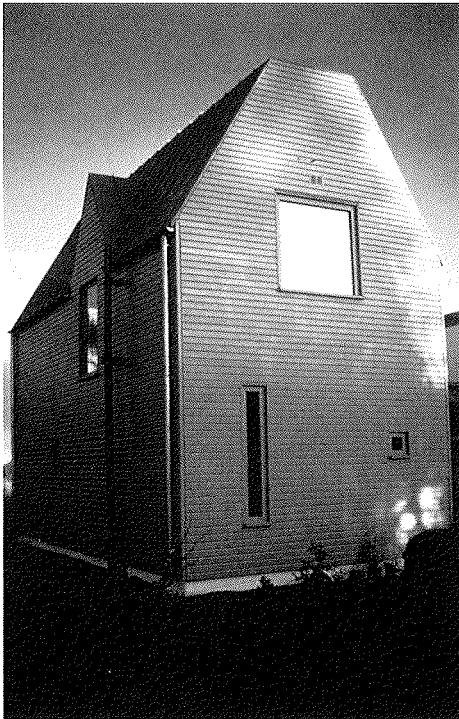


**Houses, Tulach Ard, Galway**  
**Architect: M.V. Cullinane, National Building Agency**

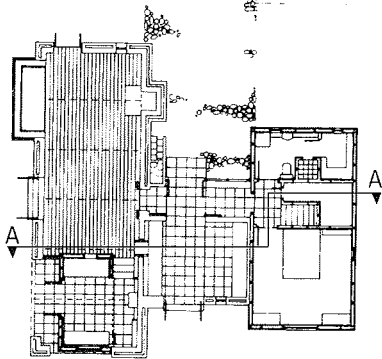
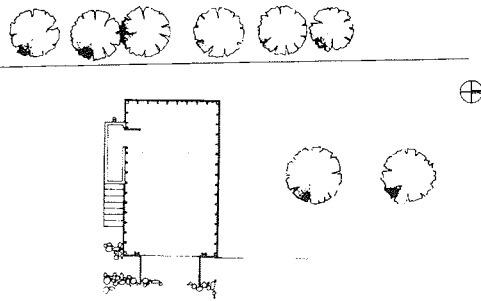
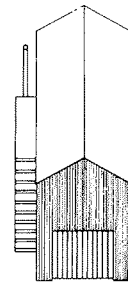


Site plan

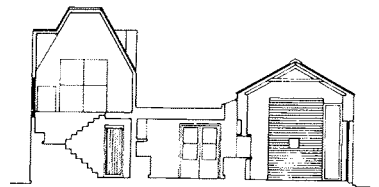
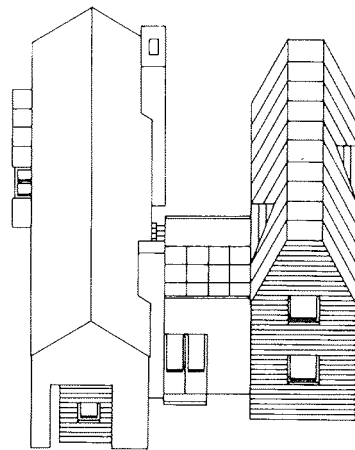
INFORMATION SHEET 15: Four Houses (continued)



House in North County Dublin  
Architects: O'Donnell & Tuomey



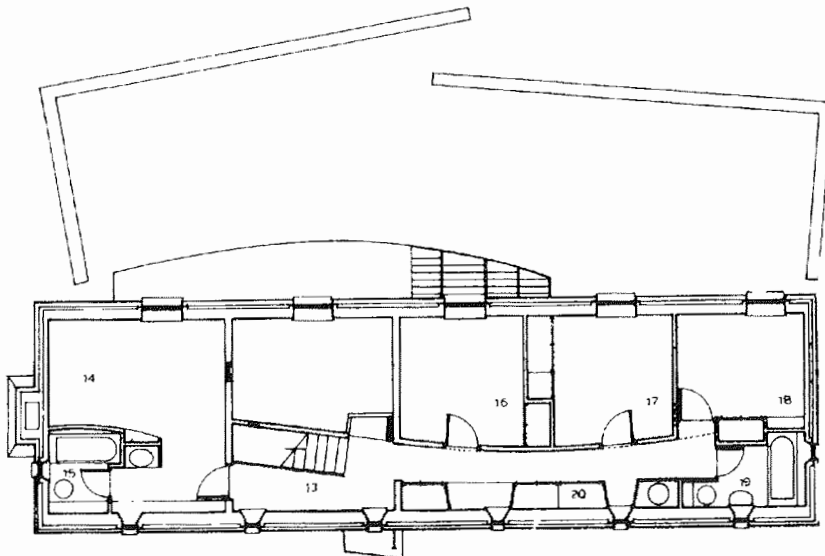
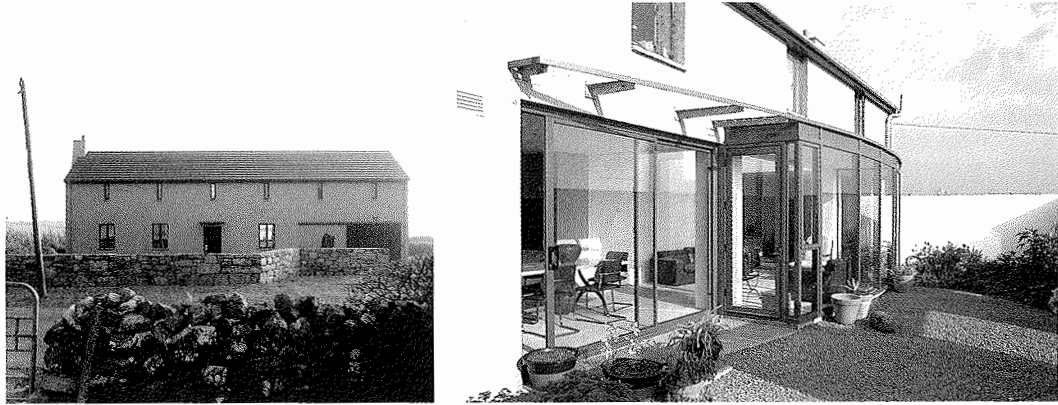
Ground floor plan/Site plan



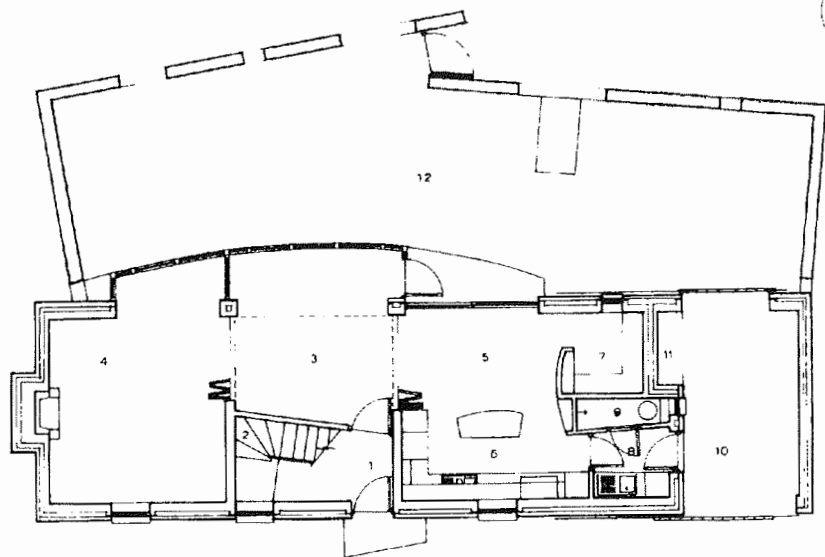
Section A - A

INFORMATION SHEET 15: Four Houses (continued)

House at Doolin, Co. Clare  
Architects: Grafton Architects

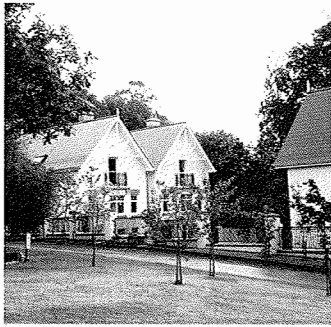


- First floor plan  
13. Landing  
14. Master bedroom  
15. En-suite  
16. Bedroom1  
17. Bedroom 2  
18. Guest bedroom  
19. Bathroom  
20. Storage wall

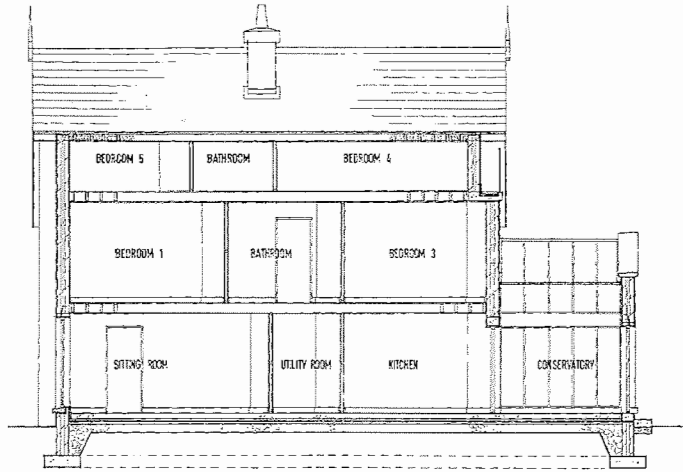


- Ground floor plan  
1. Entrance hall  
2. Stairs up  
3. Double height space  
4. Living room  
5. Dining room  
6. Kitchen  
7. Snug  
8. Utility  
9. Shower room  
10. Garage  
11. Boiler  
12. Enclosed courtyard

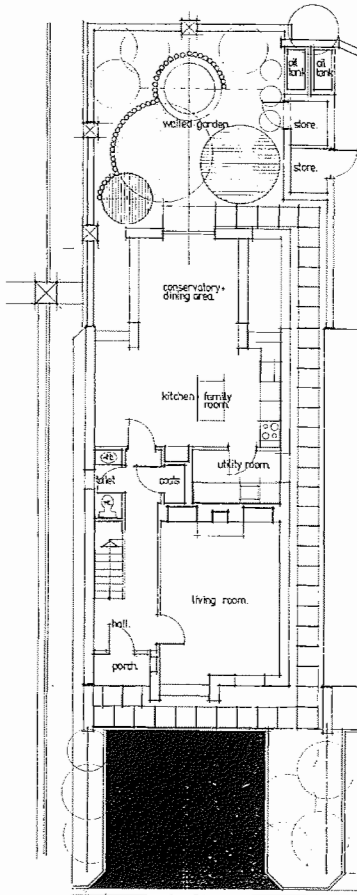
INFORMATION SHEET 15: Four Houses (continued)



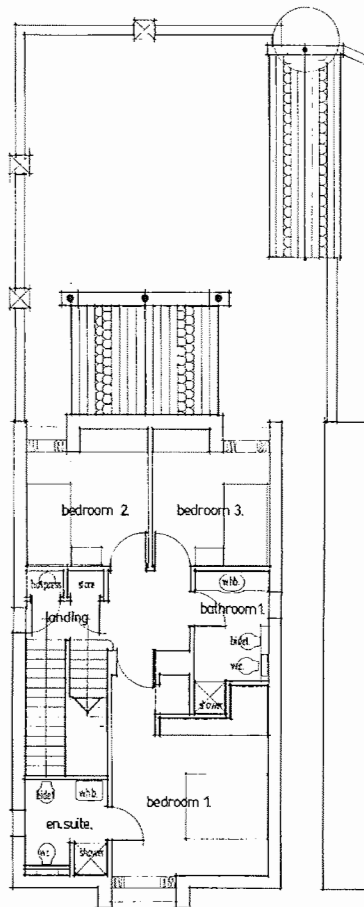
Houses, Enniskerry, Co. Dublin. Architect: Louis Burke Architects



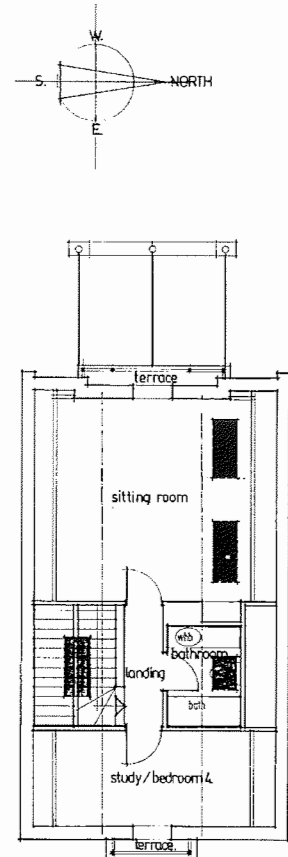
Section



Ground floor plan



First floor plan



Second floor plan